



global performance



AKSA Power Generation has produced an extensive range of generating sets for well over 26 years and is one of the worlds leading generating set manufacturers. All AKSA products are manufactured in accordance with ISO 9001, and the quality of our product is of utmost importance to us.

AKSA Power Generation has three manufacturing plants;

| | |
|-------------------------------------|--------------------|
| Günesli, İstanbul, Turkey | 10.000 sq.m |
| Mahmutbey, İstanbul, Turkey | 25.000 sq.m |
| Dursley, Gloucestershire, UK | 2.100 sq.m |

Each plant employs its own product development team. AKSA offers a wide range of diesel, petrol and gas generating sets, from 2,2 to 2500 kVA using major internationally proven engines and alternators to satisfy all customer requirements.

AKSA has experience in supplying all applications which designed and produced by the engineering department. AKSA's engineering department provides customers with their full range of expertise in order to fulfill each and every requirement. No project is too big or too small.





ELECTRICAL CONTROL SYSTEMS

Control systems range from basic key starts to automatic mains failure for standby power systems through to automatic synchronising and paralleling of units. All systems are designed to be as user friendly as possible using control modules from Deep Sea Electronics.

CANOPIES & CONTAINERS

AKSA produces silent (85 dBA at 1 metre or better), super silent (75 dBA at 1 meter or better) and weather proof canopies for our generating set's ranging from 8,5 kVA to 800 kVA, over 800 kVA we offer 20,30 and 40 foot containers. Thanks to our new modular canopies, Akxa open generating sets ranging from 8,5 kVA to 275 kVA can now be easily be converted in to a canopied set.



SALES, MARKETING AND SERVICE

At AKSA we have a very efficient world-wide sales, marketing and after-sales customer support organization. In Turkey alone, we have 16 main dealers, in the rest of the world we have offices and warehouses in 10 countries. These include; United Kingdom, Singapore, Kyrgyzistan, Kazakhstan, Nigeria, Iran, Iraq, UAE (Dubai), Algeria, China, which gives full sales and service support to our customers.

Akxa after-sales and spare part company is staffed by technicians who are given constant training on the generating set manufacture.





Standard Specifications:

- The generators in this range are powered by (B&S) Vanguard engines and are for the most demanding applications and operating conditions.
- Reliability, durability and performance put them out the top of the commercial gen-set category.
- All generators come with a low oil shut down sensor.
- The brushless, maintenance free, circuit breaker protected alternator with a choice of panel options finishes off the generator perfectly making it the choice of professionals.
- ISO 8528 ratings are given for altitude below 100 metres and 25°C ambient temperature.

from 1,76 kW to 8,8 kW

SINGLE PHASE GEN - SETS



GASOLINE ENGINE

GENERAL SPECIFICATION

| Maximum Power | | | Engine, 4 stroke, OHV, 3000 rpm | | | | | Runtime @%50 Load | Weight (Dry) | Dimensions L x W x H | Noise Level @7m | | Trolley kit | Automatic Start Panel | Canopy |
|------------------|-----------------|---------------------|----------------------------------|--------------------|------------|----------------|----------------|----------------------|-----------------|-------------------------|--------------------|-----|-------------|-----------------------|--------|
| 50 Hz, 230/115 V | | | Briggs&Stratton Vanguard Type | HP @3600 rpm | Oil Safety | Electric Start | Fuel Tank L | | | | Lwa | dBA | | | |
| Model Name | kW ISO 8528* | kVA (1) Cosφ 0,8 | | | | | | | | | | | | | |
| AB 22 M | 1.76 | 2.2 | 85432 | 4 | • | x | 3 | 4hr. 6min. | 30 | 60 x 41 x 42 | 95 | 72 | x | x | x |
| ABE 30 M | 2.4 | 3 | 117432 | 6 | • | x | 16 | 13hr. 20min. | 51 | 64 x 45 x 63 | 93 | 70 | • | x | x |
| ABE 44 M | 3.5 | 4.4 | 138432 | 7.5 | • | x | 16 | 10hr. 19min. | 55 | 67 x 46 x 66 | 95 | 72 | • | x | x |
| ABE 55 M | 4.4 | 5.5 | 185432 | 9 | • | x | 16 | 9hr. 15min. | 80 | 70 x 55 x 68 | 96 | 73 | • | x | x |
| ABE 55 ME | 4.4 | 5.5 | 185432 | 9 | • | • | 16 | 9hr. 15min. | 85 | 70 x 55 x 68 | 96 | 73 | • | x | x |
| ABE 80 M | 6.4 | 8 | 245432 | 13 | • | x | 16 | 6hr. 48min. | 106 | 78 x 56 x 77 | 97 | 74 | • | x | x |
| ABE 80 ME | 6.4 | 8 | 245432 | 13 | • | • | 16 | 6hr. 48min. | 111 | 78 x 56 x 77 | 97 | 74 | • | x | x |
| ABE 110 ME | 8.8 | 11 | 350447 | 18 | • | • | 16 | 4hr. 27min. | 122 | 91 x 74 x 75 | 98 | 75 | • | ° | ° |
| ABE 110 MEK | 8.8 | 11 | 350447 | 18 | • | • | 22 | 6hr. 05min. | 195 | 98 x 62 x 90 | 90 | 68 | • | ° | • |

* Generating sets in accordance with the ISO 8528 international standards. • Standard, ◦ Optional, x Not Available, (1) Equivalent Max. kVA
 Manufacturer reserves the right to make changes in model, technical specifications, equipment and accessories without prior notice.

STANDARD PANEL A

- On -Off button or key switch
- 230 V, 15 A schuko socket
- 230 V international socket
- Circuit breaker
- Hours run meter (for > 6 kW)
- Signal lamp, Vac



OPTIONAL PANEL B

- On -Off button or key switch
- 230 V, 15 A schuko socket
- 230 V international socket
- Circuit breaker
- Hours run meter
- Volt frequency meter (by LED)



OPTIONAL AUTOMATIC START PANEL

- Voltmeter
- Amperemeter
- Control with A 820 AMF module
- Automatic transfer switch
- Static battery charger



Standard Specifications:

- The generators in this range are powered by (B&S) Vanguard engines and are for the most demanding applications and operating conditions.
- Reliability, durability and performance put them out the top of the commercial gen-set category.
- All generators come with a low oil shut down sensor.
- Circuit breaker protected alternator with a choice of panel options finishes off the generator perfectly making it the choice of professionals.
- ISO 8528 ratings are given for altitude below 100 metres and 25°C ambient temperature.



from 4,4 kW to 8,8 kW



GASOLINE ENGINE

THREE PHASE GEN - SETS

GENERAL SPECIFICATION

| Maximum Power | | | Engine rpm, 4 stroke, OHV | | | | | Runtime @%50 Load | Weight (Dry) | Dimensions L x W x H | Noise Level @7m | | Trolley kit | Automatic Start Panel | Canopy |
|------------------|---------------------|-----------------|----------------------------------|--------------------|------------|----------------|----------------|----------------------|-----------------|-------------------------|--------------------|-----|-------------|-----------------------|--------|
| 50 Hz, 400/230 V | | | Briggs&Stratton Vanguard Type | HP @3600 rpm | Oil Safety | Electric Start | Fuel Tank L | | | | Lwa | dBA | | | |
| Model Name | kVA (1) Cosφ 0,8 | kW ISO 8528* | | | | | | hr | kg | cm | | | | | |
| ABE 55 T | 5.5 | 4.4 | 185432 | 9 | • | × | 16 | 9.15" | 76 | 70 x 55 x 68 | 96 | 73 | • | × | × |
| ABE 55 TE | 5.5 | 4.4 | 185432 | 9 | • | • | 16 | 9.15" | 80 | 70 x 55 x 68 | 96 | 73 | • | × | × |
| ABE 80 T | 8 | 6.4 | 245432 | 13 | • | × | 16 | 6.48" | 102 | 78 x 56 x 77 | 97 | 74 | • | × | × |
| ABE 80 TE | 8 | 6.4 | 245432 | 13 | • | • | 16 | 6.48" | 106 | 78 x 56 x 77 | 97 | 74 | • | × | × |
| ABE 110 TE | 11 | 8.8 | 350447 | 18 | • | • | 16 | 4.27" | 117 | 91 x 74 x 75 | 98 | 75 | • | ○ | ○ |
| ABE 110 TEK | 11 | 8.8 | 350447 | 18 | • | • | 22 | 6.05" | 195 | 98 x 62 x 90 | 90 | 68 | • | ○ | • |

* Generating sets in accordance with the ISO 8528 international standards. • Standard, ○ Optional, × Not Available, (1) Equivalent Max. kVA
Manufacturer reserves the right to make charges in model, technical specifications, equipment and accessories without prior notice.

STANDARD PANEL A

- On -Off button or key switch
- 230 V, 15 A schuko socket
- 400 V international socket
- Circuit breaker
- Hours run meter (for > 6 kW)
- Signal lamp, Vac



OPTIONAL PANEL B

- On -Off button or key switch
- 230 V, 15 A schuko socket
- 400 V international socket
- Circuit breaker
- Hours run meter
- Volt frequency meter (by LED)



OPTIONAL AUTOMATIC START PANEL

- Voltmeter
- Amperemeter
- Control with A 820 AMF module
- Automatic transfer switch
- Static battery charger





Standard Open Set Specifications:

- Compact power units.
- Lister Petter, four cycle, water cooled diesel engine.
- Cooling radiator and fan.
- Mechanical governor.
- Electric Starter & Charge alternator.
- Normal duty, dry type air filter.
- Single bearing alternator, IP21, class H insulation.
- Standard voltage 400/230 V, 50 Hz.
- Welded steel base frame with A/V mounting.
- Fuel tank built in the base frame.
- Forklift pockets within baseframe.
- Flexible fuel connection hoses and lube-oil drain valve fitted.
- Starter battery with cables and rack.
- Industrial type silencer delivered loose.
- Engine jacket water heater for automatic models.
- Technical documentation.
- Modular silent canopies are available on the whole range which can also be installed at a later date.

from 8 kVA to 30 kVA

LISTER PETTER POWERED

THREE PHASE GEN - SETS

GENERAL SPECIFICATIONS

| Genset Specifications | | | | | Engine Specifications | | | | | | | | Open Version Genset | | Silent Version Genset | | Control Panel | | |
|-----------------------|-----------------|-------|----------------|-------|-----------------------|-------|----------|------|------|------|--------|----------------------|---------------------|----------------|-----------------------|-------|---------------|-------|-------|
| 50 Hz, 400/230 V | | | | | Engine | | Cylinder | | | Fuel | | Dimension & Weight | | Canopy | Dry | Model | | | |
| Model | kVA Cosφ 0,8 | | kW ISO8528* | | Standby Net | Model | Speed | Typ. | Cap. | Bore | Stroke | Consumption @75%load | Tank capacity | LxWxH | Dry | Model | Weight | Man. | Auto. |
| Name | Standby | Prime | Standby | Prime | kWm | | RPM | No | L | mm | mm | L/h | L | m | kg. | | kg. | | |
| ALP 8 | 8.5 | 7.8 | 6.8 | 6.2 | 8.2 | LPW 2 | 1500 | 2L | 0.93 | 86 | 80 | 1.5 | 80 | 1.38x0.77x0.98 | 390 | ASM 1 | 515 | ME 30 | P 30 |
| ALP 12 | 12 | 11 | 9.6 | 8.8 | 12.1 | LPW 3 | 1500 | 3L | 1.39 | 86 | 80 | 2.2 | 96 | 1.45x0.82x1.04 | 450 | ASM 2 | 600 | | |
| ALP 15 | 15 | 13.5 | 12 | 10.8 | 14.2 | LPW 2 | 3000 | 2L | 0.93 | 86 | 80 | 3.1 | 80 | 1.38x0.77x0.98 | 375 | ASM 1 | 525 | | |
| ALP 18 | 17.5 | 16 | 13.2 | 12 | 16.2 | LPW 4 | 1500 | 4L | 1.86 | 86 | 80 | 2.7 | 96 | 1.45x0.82x1.04 | 485 | ASM 2 | 745 | | |
| ALP 22 | 22 | 19 | 17.6 | 15.2 | 20.9 | LPW 3 | 3000 | 3L | 1.39 | 86 | 80 | 4.6 | 96 | 1.45x0.8x1.04 | 450 | ASM 2 | 600 | | |
| ALP 30 | 30 | 27 | 24 | 21.6 | 28.3 | LPW 4 | 3000 | 4L | 1.86 | 86 | 80 | 6.1 | 96 | 1.45x0.8x1.04 | 490 | ASM 2 | 750 | | |

(1) Standby Power: Standby duty, operation under variable load, without over load

(2) Prime Power: Continuous duty operation, under variable load 24/24h- 10% over load permissible 1 hour/12 hours

* ISO 8528: Ratings are given for 25°C ambient temperature. Altitude: 100m above sea level. Derating, please contact us or refer to data sheet.

Manufacturer reserves the right to make changes in model, technical specifications, color, equipment and accessories without prior notice.

Standard Open Set Specifications:

- Compact power units.
- John Deere four cycle, water cooled diesel engine.
- Cooling radiator and fan.
- Mechanical governor.
- Electric Starter & Charge alternator.
- Normal duty, dry type air filter.
- Single bearing alternator, IP21, class H insulation.
- Standard voltage 400/230 V, 50 Hz.
- Welded steel base frame with A/V mounting.
- Fuel tank built in the base frame.
- Forklift pockets within baseframe (except AJD 275)
- Flexible fuel connection hoses and lube-oil drain valve fitted.
- Starter battery with cables and rack.
- Industrial type silencer and steel bellows delivered loose.
- Engine jacket water heater for automatic models.
- Technical documentation.
- Modular silent canopies are available on the whole range which can also be installed at a later date.



from 33 kVA to 275 kVA

DEERE JOHN DEERE POWERED

THREE PHASE GEN - SETS

GENERAL SPECIFICATIONS

| Genset Specifications | | | | | Engine Specifications | | | | | | | Open Version Genset | | Silent Version Genset | | Control Panel | | |
|-----------------------|--------------|-----|---------|-------|-----------------------|--------|----------|--------|---------|-----------|--------------------------|---------------------|----------------|-----------------------|-------|---------------|-------|-------|
| 50 Hz, 400/230 V (1) | | | | | Engine | | Cylinder | | | Fuel | | Dimension & Weight | | Canopy | Dry | Model | | |
| Model Name | kVA | | kW | | Standby Net kWm | Model | Typ. No | Cap. L | Bore mm | Stroke mm | Consumption @75%load L/h | Tank capacity L | LxWxH m | Dry kg. | Model | Weight kg. | Man. | Auto. |
| | Cosφ 0,8 (2) | (3) | Standby | Prime | | | | | | | | | | | | | | |
| AJD 33 | 33 | 28 | 26.4 | 22.4 | 29 | 3029 D | 3L | 2.9 | 106 | 110 | 5 | 115 | 1.6x0.88x1.30 | 800 | ASM 3 | 1005 | ME 40 | P 500 |
| AJD 44 | 44 | 40 | 35.2 | 32 | 38.5 | 4039 D | 4L | 3.9 | 106 | 110 | 7.5 | 132 | 1.86x0.92x1.33 | 890 | ASM 4 | 1230 | | |
| AJD 70 | 70 | 63 | 56 | 50.4 | 61 | 4039 T | 4L | 3.9 | 106 | 110 | 10.5 | 132 | 1.86x0.93x1.33 | 1020 | ASM 4 | 1345 | | |
| AJD 90 | 90 | 80 | 72 | 56 | 78 | 4045 T | 4L | 4.5 | 106 | 127 | 14 | 220 | 2.18x1.03x1.48 | 1185 | ASM 5 | 1620 | | |
| AJD 110 | 110 | 100 | 88 | 80 | 98 | 4045 H | 4L | 4.5 | 106 | 127 | 16.5 | 220 | 2.18x1.03x1.53 | 1225 | ASM 5 | 1690 | | |
| AJD 132 | 132 | 120 | 105.6 | 96 | 117 | 6068 T | 6L | 6.8 | 106 | 127 | 18.5 | 370 | 2.34x1.13x1.55 | 1370 | ASM 6 | 1970 | | |
| AJD 165 | 165 | 150 | 132 | 120 | 149 | 6068 H | 6L | 6.8 | 106 | 127 | 24 | 370 | 2.44x1.13x1.58 | 1410 | ASM 6 | 2090 | | |
| AJD 170 | 170 | 154 | 136 | 123.2 | 149 | 6068 H | 6L | 6.8 | 106 | 127 | 25 | 370 | 2.44x1.13x1.58 | 1550 | ASM 6 | 2170 | | |
| AJD 200 | 200 | 180 | 160 | 144 | 176.5 | 6068 H | 6L | 6.8 | 106 | 127 | 31.5 | 370 | 2.35x1.13x1.58 | 1670 | ASM 6 | 2270 | | |
| AJD 275 | 275 | 250 | 220 | 200 | 258 | 6081 H | 6L | 8.1 | 116 | 129 | 41 | 420 | 2.9x1.15x1.87 | 2130 | ASM 7 | 2880 | | |

(1) Available in the following voltages: 415/240 V - 400/230 V - 380/220 V - 220/127 V - 200/115 V

(2) Standby Power: Standby duty, operation under variable load, without over load

(3) Prime Power: Continuous duty operation, under variable load 24/24h- 10% over load permissible 1 hour/12 hours

*ISO 8528: Ratings are given for 25°C ambient temperature. Altitude: 100m above sea level. Derating, please contact us or refer to data sheet. Manufacturer reserves the right to make changes in model, technical specifications, color, equipment and accessories without prior notice.

Standard Open Set Specifications:

- Compact power units.
- Cummins four cycle, water cooled diesel engine.
- Cooling radiator and fan.
- Electrical governor on AC90, 160, 250 and 275.
- Mechanical governor.
- Electric Starter & Charge alternator.
- Normal duty, dry type air filter.
- Single bearing alternator, IP21, class H insulation.
- Standard voltage 400/230 V, 50 Hz.
- Welded steel base frame with A/V mounting.
- Fuel tank built in the base frame.
- Forklift pockets within baseframe on AC39 to AC250.
- Flexible fuel connection hoses and lube-oil drain valve fitted.
- Starter battery with cables and rack.
- Industrial type silencer and steel bellows delivered loose.
- Engine jacket water heater for automatic models.
- Technical documentation.
- Modular silent canopies are available on the whole range which can also be installed at a later date.



from 39 kVA to 275 kVA



THREE PHASE GEN - SETS

GENERAL SPECIFICATIONS

| Genset Specifications | | | | | Engine Specifications | | | | | | | Open Version Genset | | Silent Version Genset | | Control Panel | | | |
|-----------------------|-------------|-----------|---------|-------|-----------------------|------------|------|------|----------|--------|----------------------|---------------------|----------------|-----------------------|-------|---------------|--------|--------|-----|
| 50 Hz, 400/231 (1) | | | | | Engine | | | | Cylinder | | | Fuel | | Dimension & Weight | | Canopy | Dry | Model | |
| Model | kVA | | kW | | Standby Net | Model | Typ. | Cap. | Bore | Stroke | Consumption @75%load | Tank capacity | LxWxH | Dry | Model | Weight | Man. | Auto. | |
| | (2) Standby | (3) Prime | Standby | Prime | | | | | | | | | | | | | | | kWm |
| AC 39 | 39 | 35 | 31 | 28 | 36 | 4B3.3G1 | 4L | 3.3 | 95 | 110 | 6.2 | 132 | 1.86x0.9x1.3 | 700 | ASM 4 | 1050 | ME 40 | P 500 | |
| AC 55 | 55 | 50 | 44 | 40 | 51 | 4BT3.3G2 | 4L | 3.3 | 95 | 110 | 8.4 | 132 | 1.86x0.9x1.3 | 775 | ASM 4 | 1125 | | | |
| AC 66 | 66 | 60 | 52 | 48 | 64 | 4BT3.9G4 | 4L | 3.92 | 102 | 120 | 10.5 | 132 | 1.86x0.9x1.32 | 850 | ASM 4 | 1200 | | | |
| AC 70 | 70 | 63 | 56 | 50 | 64 | 4BT3.9G4 | 4L | 3.92 | 102 | 120 | 11 | 132 | 1.86x0.9x1.32 | 880 | ASM 4 | 1230 | | | |
| AC 90 | 90 | 80 | 72 | 64 | 81 | 4BTA3.9G3 | 4L | 3.92 | 102 | 120 | 14 | 132 | 1.86x0.9x1.32 | 940 | ASM 4 | 1300 | | | |
| AC 115 | 115 | 105 | 92 | 84 | 104 | 6BT5.9G6 | 6L | 5.88 | 102 | 120 | 17.3 | 220 | 2.15x1.0x1.67 | 1140 | ASM 5 | 1600 | | | |
| AC 150 | 150 | 135 | 120 | 108 | 130 | 6CT8.3G2 | 6L | 8.3 | 114 | 135 | 22 | 370 | 2.31x1.1x1.6 | 1445 | ASM 6 | 2115 | | | |
| AC 160 | 160 | 140 | 128 | 112 | 140 | 6BTA5.9G2 | 6L | 5.88 | 102 | 120 | 24 | 220 | 2.15x1.0x1.37 | 1350 | ASM 5 | 1810 | | | |
| AC 200 | 200 | 180 | 160 | 144 | 175 | 6CTA8.3G2 | 6L | 8.3 | 114 | 135 | 30 | 370 | 2.31x1.1x1.6 | 1560 | ASM 6 | 2175 | | | |
| AC 250 | 250 | 225 | 200 | 180 | 231 | 6CTAA8.3G2 | 6L | 8.3 | 114 | 135 | 38 | 370 | 2.31x1.1x1.6 | 1920 | ASM 7 | 2870 | | | |
| ACL 250 | 250 | 225 | 200 | 180 | 225 | LTA10G2 | 6L | 10 | 125 | 136 | 37 | 420 | 2.97x1.15x1.73 | 2020 | ASM 7 | 2970 | P 2010 | P 2020 | |
| AC 275 | 275 | 250 | 220 | 200 | 238 | LTA10G3 | 6L | 10 | 125 | 136 | 39 | 420 | 2.97x1.15x1.73 | 2180 | ASM 7 | 3030 | | | |

(1) Available in the following voltages: 415/240 V - 400/230 V - 380/220 V - 220/127 V - 200/115 V

(2) Standby Power: Standby duty, operation under variable load, without over load

(3) Prime Power: Continuous duty operation, under variable load 24/24h- 10% over load permissible 1 hour/12 hours

*ISO 8528: Ratings are given for 25°C ambient temperature. Altitude: 100m above sea level. Derating, please contact us or refer to data sheet. Manufacturer reserves the right to make changes in model, technical specifications, color, equipment and accessories without prior notice.

Standard Open Set Specifications:

- Compact power units.
- Cummins four cycle, water cooled diesel engine.
- Cooling radiator and fan.
- Electronic governor.
- Electric Starter & charge alternator.
- Normal duty, dry type air filter.
- Single bearing alternator, IP21, class H insulation.
- Standard voltage 400/230 V, 50 Hz.
- Welded steel base frame with A/V mounting.
- Fuel tank built in the base frame
- Flexible fuel connection hoses and lube-oil drain hand pump fitted.
- Starter batteries with cables and rack.
- Industrial type silencer and steel bellows delivered loose.
- Engine jacket water heater for automatic models.
- Technical documentation.
- Silent canopies or containers are available on the whole range.



from 350 kVA to 825 kVA



THREE PHASE GEN - SETS

GENERAL SPECIFICATIONS

| Genset Specifications | | | | | Engine Specifications | | | | | | | Open Version Genset | | Silent Version Genset | | Control Panel | | |
|-----------------------|----------------------|-----------|------------------|----------------|-----------------------|------------|----------|--------|---------|-----------|--------------------------|---------------------|----------------|-----------------------|-------------|---------------|--------|--------|
| 50 Hz, 400/230 | | | | | Engine | | Cylinder | | | Fuel | | Dimension & Weight | | Canopy | Dry | Model | | |
| Model Name | kVA | | kW | | Standby Net kWm | Model | Typ. No | Cap. L | Bore mm | Stroke mm | Consumption @75%load L/h | Tank capacity L | LxWxH m | Dry kg. | & Container | Weight kg. | Man. | Auto. |
| | Cosφ 0,8 (2) Standby | (3) Prime | ISO8528* Standby | ISO8528* Prime | | | | | | | | | | | | | | |
| AC 350 | 350 | 316 | 280 | 316 | 301 | NT 855-G6 | 6L | 14 | 140 | 152 | 52 | 420 | 3.23x1.10x1.98 | 2620 | AS 400 | 3740 | P 2010 | P 2020 |
| AC 400 | 400 | 356 | 320 | 284 | 341 | NTA 855-G4 | 6L | 14 | 140 | 152 | 57 | 420 | 3.23x1.10x1.98 | 2830 | AS 400 | 4100 | | |
| AC 440 | 440 | 400 | 352 | 320 | 380 | NTA 855-G7 | 6L | 14 | 140 | 152 | 65 | 420 | 3.23x1.10x1.98 | 2850 | AS 400 | 4120 | | |
| AC 500 | 500 | 450 | 400 | 360 | 428 | KTA 19-G3 | 6L | 18,9 | 159 | 159 | 73 | 550 | 3.43x1.3x2.12 | 3760 | AS 710 | 5380 | | |
| ACQ 515 | 515 | 460 | 412 | 368 | 441 | QSX 15-G6 | 6L | 15 | 137 | 169 | 74.3 | 620 | 3.6x1.3x1.98 | 4080 | AS 710 | 5700 | | |
| ACQ 550 | 550 | 500 | 440 | 400 | 482 | QSX 15-G8 | 6L | 15 | 137 | 169 | 78.3 | 620 | 3.6x1.3x1.98 | 4080 | AS 710 | 5700 | | |
| AC 550 | 550 | 500 | 440 | 400 | 484 | KTA19-G4 | 6L | 18,9 | 159 | 159 | 82 | 550 | 3.43x1.3x2.12 | 3760 | AS 710 | 5380 | | |
| AC 650 | 650 | 590 | 520 | 472 | 554 | KTA19-G8 | 6L | 18,9 | 159 | 159 | 92 | 550 | 3.43x1.3x2.12 | 3990 | AS 710 | 5610 | | |
| AC 703 | 703 | 638 | 562 | 510 | 593 | VTA 28-G5 | 12V | 28 | 140 | 152 | 104 | 920 | 3.9x1.41x2.14 | 5590 | AS 710 | 7190 | | |
| ACQ 720 | 720 | 650 | 576 | 520 | 612 | QSK 23-G1 | 6L | 23.15 | 170 | 170 | 102 | 1000 | 4.2x1.41x2.2 | 5560 | SC 20 | 10240 | | |
| AC 825 | 825 | 750 | 660 | 600 | 700 | VTA 28 G6 | 12V | 28 | 140 | 152 | 133 | 920 | 4.0x1.41x2.16 | 5890 | AS 710 | 7480 | | |

(1) Available in the following voltages: 415/240 V - 400/230 V - 380/220 V - 220/127 V - 200/115 V

(2) Standby Power: Standby duty, operation under variable load, without over load

(3) Prime Power: Continuous duty operation, under variable load 24/24h- 10% over load permissible 1 hour/12 hours

*ISO 8528: Ratings are given for 25°C ambient temperature. Altitude: 100m above sea level. Derating, please contact us or refer to data sheet.

Manufacturer reserves the right to make changes in model, technical specifications, color, equipment and accessories without prior notice.



Standard Open Set Specifications:

- Compact power units.
- Cummins four cycle, water cooled diesel engine.
- Cooling radiator and fan.
- Electronic governor.
- Electric Starter & charge alternator.
- Normal duty, dry type air filter.
- Single bearing alternator, IP21, class H insulation.
- Standard voltage 400/230 V, 50 Hz.
- Welded steel base frame with A/V mounting.
- Flexible fuel connection hoses and lube-oil drain hand pump fitted.
- Starter batteries with cables and rack.
- Industrial type silencer and steel bellows delivered loose.
- Engine jacket water heater for automatic models.
- Technical documentation.
- Silent containers.

from 830 kVA to 2500 kVA



THREE PHASE GEN - SETS

GENERAL SPECIFICATIONS

| Genset Specifications | | | | | Engine Specifications | | | | | | | Open Version Genset | | Silent Version Genset | | Control Panel | | |
|-----------------------|--------------|-----------|-------------|-------|-----------------------|------------|---------|----------|---------|-----------|--------------------------|---------------------|--------------------|-----------------------|-----------------|---------------|------|-------|
| 50 Hz, 400/231 V | | | | | Engine | | | Cylinder | | | Fuel | | Dimension & Weight | | Dry | Model | | |
| Model Name | kVA Cosφ 0,8 | | kW ISO8528* | | Standby Net kWm | Model | Typ. No | Cap. L | Bore mm | Stroke mm | Consumption @75%load L/h | Tank capacity L | LxWxH m | Dry ton | Container Model | Weight ton | Man. | Auto. |
| | (2) Standby | (3) Prime | Standby | Prime | | | | | | | | | | | | | | |
| ACQ 830 | 830 | 750 | 664 | 600 | 705 | QSK 23 G2 | 6L | 23.15 | 170 | 170 | 122 | 1000 | 4.2x1.7x2.2 | 5.86 | SC 20 | 10.54 | | |
| ACQ 881 | 880 | 800 | 704 | 640 | 746 | QSK 23 G3 | 6L | 23.15 | 170 | 170 | 121 | 1000 | 4.2x1.7x2.2 | 5.86 | SC 20 | 10.54 | | |
| AC 1030 | 1030 | 930 | 824 | 744 | 873 | KTA 38 G3 | 12V | 37.8 | 159 | 159 | 151 | 1250 | 4.28x1.77x2.35 | 7.68 | SC 30 | 14.6 | | |
| ACQ 1030 | 1030 | 930 | 824 | 744 | 875 | QST30 G3 | 12V | 30.48 | 140 | 165 | 139 | 1250 | 4.23x1.77x2.33 | 7.25 | SC 30 | 14.2 | | |
| AC 1130 | 1130 | 1030 | 904 | 824 | 948 | KTA 38 G5 | 12V | 37.8 | 159 | 159 | 161 | 1250 | 4.32x1.77x2.35 | 7.72 | SC 30 | 14.7 | | |
| ACQ 1130 | 1130 | 1030 | 904 | 824 | 951 | QST 30 G4 | 12V | 30.48 | 140 | 165 | 151 | 1250 | 4.33x2.0x2.25 | 7.9 | SC 30 | 14.6 | | |
| AC 1435 | 1435 | 1280 | 1148 | 1024 | 1204 | KTA 50 G3 | 16V | 50.3 | 159 | 159 | 199 | 2000 | 4.91x2.12x2.26 | 10.3 | SC 40 | 18.3 | | |
| AC 1675 | 1675 | 1500 | 1340 | 1200 | 1397 | KTA 50 GS8 | 16V | 50.3 | 159 | 159 | 238 | 2000 | 5.45x2.12x2.84 | 11.8 | SCH 40 | 19.7 | | |
| ACQ 2100 | 2100 | 1900 | 1680 | 1520 | 1755 | QSK 60 G3 | 16V | 60.2 | 159 | 190 | 263 | 2000 | 6.02x2.5x3.22 | 15.5 | SCH 40 | N/A | | |
| ACQ 2250 | 2250 | 2000 | 1800 | 1600 | 1880 | QSK 60 G4 | 16V | 60.2 | 159 | 190 | 291 | 2000 | 6.02x2.5x3.22 | 16.5 | SCH 40 | N/A | | |
| ACQ 2500 | 2500 | 2250 | 2000 | 1800 | 2105 | QSK 60 G8 | 16V | 60.2 | 159 | 190 | 460 | 2000 | 6.02x2.5x3.22 | 17.6 | N/A | N/A | | |

(1) Available in the following voltages: 415/240 V - 400/230 V - 380/220 V

(2) Standby Power: Standby duty, operation under variable load, without over load

(3) Prime Power: Continuous duty operation, under variable load 24/24h- 10% over load permissible 1 hour/12 hours

*ISO 8528: Ratings are given for 25°C ambient temperature. Altitude: 100m above sea level. Derating, please contact us or refer to data sheet. Manufacturer reserves the right to make changes in model, technical specifications, color, equipment and accessories without prior notice.

Standard Open Set Specifications:

- Compact power units.
- GM, four cycle, water cooled engine.
- Cooling radiator and fan.
- Electronic governor.
- Electric Starter & charge alternator.
- Normal duty, dry type air filter.
- Single bearing alternator, IP21, class H insulation.
- Standard voltage 400/230 V, 50 Hz.
- Welded steel base frame with A/V mounting.
- Forklift pockets within baseframe.
- Flexible gas connection hoses and lube-oil drain valve fitted.
- Starter battery with cables and rack.
- Industrial type silencer and steel bellows delivered loose.
- Engine jacket water heater for automatic models.
- Technical documentation.
- Modular silent canopies are available on the whole range which can also be installed at a later date.

Tuned to run on naturalgas, when they leave the factory, each set has the LPG tuning option. Naturalgas and LPG are those which gas emissions of carbon monoxide and particles are very limited.



from 25 kVA to 125 kVA



THREE PHASE GEN - SETS

GENERAL SPECIFICATIONS

| Genset Specifications | | | | | Engine Specifications | | | | | | | | Open Version Genset | | Silent Version Genset | | Control Panel | |
|-----------------------|-----------------|-------|----------------|-------|-----------------------|-------|------|----------|------|--------|----------------------------|--------------------|---------------------|--------|-----------------------|-------|---------------|--|
| 50 Hz, 400/231 V (1) | | | | | Engine | | | Cylinder | | | Gas | Dimension & Weight | | Canopy | Dry | Model | | |
| Model | kVA Cosφ 0,8 | | kW ISO8528* | | Standby Net /Power | Speed | Typ. | Cap. | Bore | Stroke | Consumption @ full load | LxWxH | Dry | | Weight | | | |
| Name | Standby | Prime | Standby | Prime | kWm | Model | RPM | No | L | mm | mm | m | kg. | Model | kg. | Man. | Auto. | |
| AGM 25 | 25 | 22 | 20 | 18 | 23 | 430 | 1500 | 4L | 3 | 102 | 91 | 7.5 | 1.6x0.85x1.2 | 500 | ASM 3 | 760 | | |
| AGM 40 | 40 | 36 | 32 | 29 | 36 | 643 | 1500 | 6V | 4.3 | 102 | 88 | 11 | 1.9x0.9x1.3 | 650 | ASM 4 | 840 | | |
| AGM 60 | 62 | 56 | 50 | 45 | 56 | 857 | 1500 | 8V | 5.7 | 102 | 88 | 17 | 2.5x1.1x1.4 | 850 | ASM 5 | 1040 | | |
| AGM 80 | 82 | 72 | 65 | 58 | 73 | 881L | 1500 | 8V | 8.1 | 108 | 111 | 24.5 | 2.5x1.1x1.4 | 1150 | ASM 6 | 1350 | | |
| AGM 100 | 100 | 90 | 80 | 72 | 88 | 881CS | 1500 | 8V | 8.1 | 108 | 111 | 28 | 2.5x1.1x1.4 | 1150 | ASM 6 | 1350 | | |
| AGM 125 | 125 | 112 | 100 | 90 | 108 | 881T | 1500 | 8V | 8.1 | 108 | 111 | 34 | 2.5x1.1x1.4 | 1150 | ASM 6 | 1350 | | |

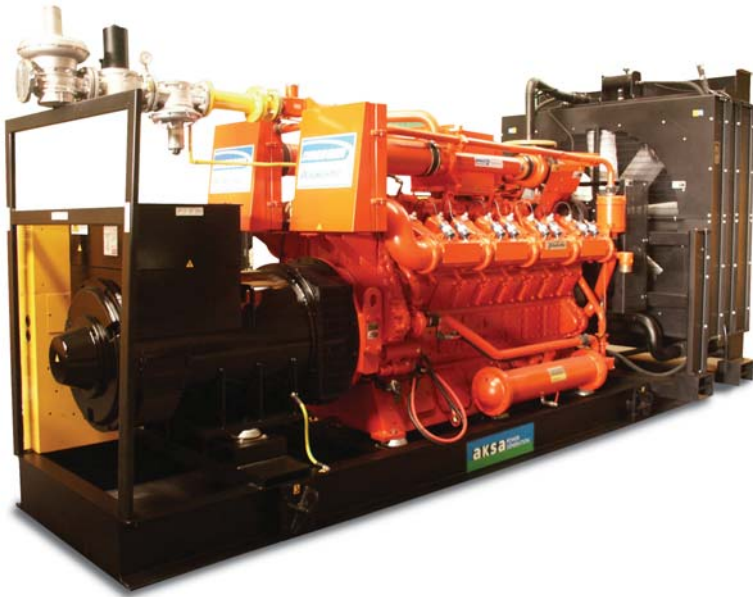
The power outputs are given for engine to run on natural gas
LHV: 8250 kcal/m³

(1) Available in the following voltages: 415/240 V - 400/230 V - 380/220 V - 220/127 V - 200/115 V

(2) Standby Power: Standby duty, operation under variable load, without over load

(3) Prime Power: Continuous duty operation, under variable load 24/24h- 10% over load permissible 1 hour/12 hours

*ISO 8528: Ratings are given for 25°C ambient temperature. Altitude: 100m above sea level. Derating, please contact us or refer to data sheet. Manufacturer reserves the right to make changes in model, technical specifications, color, equipment and accessories without prior notice.



Standard Open Set Specifications:

- WAUKESHA spark ignited lean burn gas combustion engines.
- Heavy duty, 4 cycle, water cooled, turbo charged and after cooled, replaceable wet liners.
- Electronic governor.
- Electric Starter & charge alternator.
- Dry element air filter with restriction indicator.
- Brushless, single bearing alternator, IP21, class H insulation.
- Standard voltage 400/230 V, 50 Hz.
- Fabricated and welded steel base frame.

from 310 kVA to 1310 KVA



THREE PHASE GEN - SETS

GENERAL SPECIFICATIONS

| Genset Specifications | | | | | Engine Specifications | | | | | | | Open Version Genset | | Control System | |
|-----------------------|-----------------|------------|---------|------------|-----------------------|-----------------------------|--------|------------|------|-------|------|---------------------|--|----------------|------------|
| 50 Hz, 400/230 V | | | | | | | | Cylinder | | | | Dimension & Weight | | | |
| Model | kVA Cosφ 0,8 | | kW | | ISO8528* | Engine Continuous Gross kWm | Engine | Engine | Typ. | Cap. | Bore | Stroke | Gas Consumption. @ full load Nm3/h | LxWxH m | Dry kg. |
| Name | Standby | Continuous | Standby | Continuous | | | Speed | Model | No | L | mm | mm | | | |
| AWG 310 | 310 | 281 | 248 | 225 | | 250 | 1500 | VGFF18GLD | 6L | 18 | 152 | 165 | 80 | 4.07x1.83x2.34 | 4127 |
| AWG 410 | 407 | 370 | 326 | 296 | | 331 | 1500 | VGFH24GLD | 8L | 24 | 152 | 165 | 95 | 4.47x1.98x2.54 | 5442 |
| AWG 630 | 632 | 575 | 506 | 460 | | 500 | 1500 | VGFL36GLD | 12V | 35.9 | 152 | 165 | 145 | 4.78x2.67x3.15 | 9300 |
| AWG 830 | 830 | 754 | 664 | 603 | | 660 | 1500 | VGFP48GLD | 16V | 48 | 152 | 165 | 187 | 5.39x3.12x3.45 | 12250 |
| AWG 955 | 955 | 860 | 764 | 688 | | 755 | 1000 | VHP5790GL | 12V | 94.9 | 216 | 216 | 223 | 5.99x2.9x3.51 | 17400 |
| AWG 1120 | 1120 | 1022 | 896 | 818 | | 899 | 1000 | VHP5794LT | 12V | 94.9 | 216 | 216 | 272 | 6.68x3.10x3.87 | 20862 |
| AWG 1170 | 1170 | 1057 | 936 | 846 | | 918 | 1000 | VHP7042GL | 12V | 115.4 | 238 | 216 | 269 | 6.05x2.9x3.51 | 18000 |
| AWG 1310 | 1310 | 1185 | 1048 | 948 | | 1044 | 1000 | VHP7044GSI | 12V | 115 | 238 | 216 | 327 | 6.05x2.9x3.5 | 18030 |

LHV: 8250 kcal/m³

*ISO 8528: Ratings are given for 25°C ambient temperature. Altitude: 100m above sea level. Derating, please contact us or refer to data sheet. Manufacturer reserves the right to make changes in model, technical specifications, color, equipment and accessories without prior notice.

Standard Open Set Specifications:

- Cummins spark ignited lean burn gas combustion engines.
- Heavy duty 4 cycle, water cooled, turbo charged and after cooled, four valves per cylinder, replaceable wet liners.
- Electronic governor.
- Pneumatic start system through single air starter motor.
- Electric Starter & charge alternator on GFBA315.
- Dry element air filter with restriction indicator.
- Brushless, two bearing, IP22, class H insulation for LV.
- Single bearing alternator on GFBA315.
- Fabricated and welded steel base frame.



from 394 kVA to 2187 kVA



THREE PHASE GEN - SETS

GENERAL SPECIFICATIONS

| Genset Specifications | | | Engine Specifications | | | | | | | Open Version Genset | | Control | |
|-----------------------|--------------|--------------|-----------------------------|-----------|--------------|----------|-------|------|--------|-----------------------------------|---------------------------------------|---------|--------|
| 50 Hz, 400/230 V | | | Engine Continuous Power kWm | Speed RPM | Engine Model | Cylinder | | | | Gas Consumption @ full load Nm3/h | Dimension & Weight | | System |
| Model | kVA Cosφ 0,8 | kWe ISO8528* | | | | Typ. | Cap. | Bore | Stroke | | LxWxH Without bed mounted radiator mm | Dry kg. | |
| Name | Continuous | Continuous | | | No | L | mm | mm | | | | | |
| GFBA 315 | 394 | 315 | 330 | 1500 | QSK 19G | 6L | 19 | 159 | 159 | 91.6 | 3490x1267x1792 | 3856 | PCC |
| GQKA 1160 | 1438 | 1160 | 1207 | 1500 | QSK 60-GV | 16V | 60 | 159 | 190 | 310 | 4890x2240x2074 | 14832 | PCC |
| GQMA 1370 | 1712 | 1370 | 1425 | 1500 | QSV 81-G | 16V | 81.44 | 180 | 200 | 377 | 5356x1721x2661 | 14832 | PCC |
| GQMB 1570 | 1962 | 1570 | 1629 | 1500 | QSV 81-G | 16V | 81.44 | 180 | 200 | 422 | 5356x1721x2661 | 14832 | PCC |
| GQNA 1540 | 1925 | 1540 | 1600 | 1500 | QSV 91-G | 18V | 91.62 | 180 | 200 | 420 | 5606x1721x2661 | 16062 | PCC |
| GQNB 1750 | 2187 | 1750 | 1832 | 1500 | QSV 91-G | 18V | 91.62 | 180 | 200 | 472 | 5606x1721x2661 | 16062 | PCC |

LHV: 8250 kcal/m³

*ISO 8528: Ratings are given for 25°C ambient temperature. Altitude: 100m above sea level. Derating, please contact us or refer to data sheet. Manufacturer reserves the right to make changes in model, technical specifications, color, equipment and accessories without prior notice.



Canopy ASM 1



Canopy ASM 2



Canopy ASM 3



Canopy ASM 4



Canopy ASM 5



Canopy ASM 6



Canopy ASM 7



Canopy AS 400



Canopy AS 710



Silenced Containerised, SC 30

General specifications of SILENT type CANOPY

- Modular design (2 mm. sheet steel).
- Soundproofed canopy kit (except AS 400 & AS 710).
- Less than 85 dBA @ 1 m.
- Anti-corrosion powder coated phosphate priming.
- Colour black / yellow (RAL 9005 / RAL 1003).
- Insulated with acoustic foam lining.
- Central lifting.
- Lockable doors with key.
- Protective mesh for rotating parts.
- Exterior emergency stop push button.
- Residential silencer inside canopy.
- Thermally insulated engine exhaust system.
- Doors on each side.
- Panel window.
- Access to radiator filling or cap.
- Oil drains and breather (sump) extended outside canopy.
- On road trailer for soundproofed canopy.

| Canopy Model | | ASM 1 | ASM 2 | ASM 3 | ASM 4 | ASM 5 | ASM 6 | ASM 7 | AS 400 | AS 710 |
|--------------|------------------|-------|-------|-------|-------|-------|-------|-------|--------|--------|
| Dimensions | Length mm. | 1770 | 1920 | 2120 | 2500 | 3110 | 3250 | 3980 | 4400 | 5540 |
| | Width mm. | 815 | 870 | 9150 | 970 | 1060 | 1160 | 1210 | 1410 | 1660 |
| | Height mm. | 1180 | 1280 | 1480 | 1570 | 1750 | 1890 | 2050 | 2270 | 2590 |
| | Fuel tank Litres | 80 | 96 | 115 | 132 | 220 | 370 | 420 | 750 | 1150 |

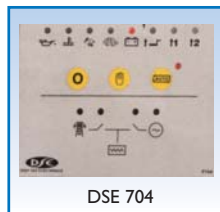
General specifications of SILENT type CONTAINER

- 20', 30' and 40' Containers.
- Sandwich mineral wool attenuation.
- Steel internal floor.
- Large lockable doors.
- Acoustic baffles for the air inlet and outlet.
- 1250 litres and 2000 litres fuel tank with retention bund.
- Residential silencer with stainless steel flexible bellows.
- Emergency light.
- White paint finishing (RAL 9010).

| Container Model | | SC 20 | SC 30 | SC 40 | SCH 40 |
|-----------------|------------------|-------|-------|-------|--------|
| Dimensions | Length mm. | 6058 | 9125 | 12192 | 12192 |
| | Width mm. | 2438 | 2438 | 2438 | 2438 |
| | Height mm. | 2591 | 2591 | 2591 | 2800 |
| | Fuel tank Litres | 1000 | 2000 | 2000 | 2000 |

| Main Features | | Panel Model | | | |
|-----------------------|--------------------------------------|-------------|--------|-----------|--------|
| | | MANUAL | | AUTOMATIC | |
| | | ME 30 | ME 40 | P 30 | P 500 |
| Operation | Control with | DSE701 | DSE701 | DSE704 | DSE704 |
| | Key switch, start / stop | • | • | x | x |
| | Modes: stop / auto / manual | x | x | • | • |
| | Volt meter selector switch | x | • | x | • |
| Genset Measurements | Emergency stop push - button | • | • | • | • |
| | Voltage & frequency by LED | x | • | x | • |
| | Voltage & frequency & current by LED | • | x | • | x |
| Engine Measurements | 3 Phase current | x | • | x | • |
| | Oil pressure | x | • | x | • |
| | Water temperature | • | • | • | • |
| | Hours run | • | • | • | • |
| Engine Protection | Number of start | x | x | • | • |
| | Low oil pressure LED | • | • | • | • |
| | High coolant temperature LED | • | • | • | • |
| | Over speed LED | • | • | • | • |
| | Under speed LED | x | x | • | • |
| | Start failure LED | x | x | • | • |
| Alternator Protection | Charge fail LED | • | • | • | • |
| | Emergency stop | • | • | • | • |
| | Under frequency | x | x | • | • |
| Automation | Over frequency | • | • | • | • |
| | Over current | • | • | • | • |
| | Short circuit | • | • | x | x |
| Miscellaneous | Remote start | x | x | • | • |
| | 3 Phase mains sensing | x | x | • | • |
| Miscellaneous | ATS change - over control | x | x | • | • |
| | Static battery charger | x | x | • | • |
| | Water preheating control | x | x | • | • |
| | Alarm buzzer | • | • | • | • |

● Standard ○ Optional x Not available



| Main Features | | Panel Model | |
|-----------------------|--|-------------|---------------------|
| | | AMF P2020 | Remote Start P 2010 |
| Operation | Control with | DSE 5220 | DSE 5210 |
| | Modes: stop / auto / manual / test / start | ● | ○ |
| | Modes: stop / auto / manual / start | ○ | ● |
| | LCD display scroll push-button | ● | ● |
| | Event log push-button | ● | ● |
| | Emergency stop push - button | ● | ● |
| Genset Instruments | 3 Phase voltage UV, VW, WU | ● LCD | |
| | Neutral NU, NV, NW | ● LCD | |
| | 3 Phase current U, V, W | ● LCD | |
| | Frequency | ● LCD | |
| | Total kVA | ● LCD | |
| | Total kW | ● LCD | |
| Mains Instruments | Power factor, cos φ | ● LCD | |
| | 3 Phase voltage LI L2, L2 L3, L3 LI | ● LCD | x |
| | Neutral NLI, NL2, NL3 | ● LCD | x |
| Engine Instruments | Frequency | ● LCD | x |
| | Oil pressure | ● LCD | |
| | Water temperature | ● LCD | |
| | Hours run | ● LCD | |
| | Speed in RPM | ● LCD | |
| Engine Protection | Battery voltage | ● LED | |
| | Low oil pressure | ● LED | |
| | High coolant temperature | ● LED | |
| | Low water level | ● LED | |
| | Start failure | ● LED | |
| | Charge fail | ● LED | |
| | Low / high battery volts | ● LED | |
| | Stop failure | ● LED | |
| Emergency stop | ● LED | | |
| Alternator Protection | Under / over volt | ● | |
| | Under / over frequency | ● | |
| | Over current | ● | |
| | Short circuit | ○ | |
| Mains Failure | Under / over volt | ● | ○ |
| | Under / over frequency | ● | ○ |
| Miscellaneous | Out of limit | ● | ○ |
| | ATS change - over control | ● | ○ |
| | Static battery charger | ● | ○ |
| | Water preheating control | ● | ○ |
| | Alarm buzzer | ○ | ○ |
| | RS 232 communication | ● | ● |
| | RS 485 communication | ○ | ○ |

Features

- 360° rotatable mast
- Hand winch
- Automatic mast lock
- 4x1000 watts Metal Halide Lamps
- Simple, one-staff operation,
- 1500 rpm, water cooled diesel engine,
- Quiet operation,
- 50 hours run time fuel tank

Features

- Buildings sites
- Road and railway areas
- Pipe-Line areas
- Performance and exhibitons
- Civil defence



Generating Set

- Listet Petter, LPW2, water cooled, 1500 rpm diesel engine
- Spin on type oil filter and fuel filter
- Dry type cyclonic air cleaner
- 12 V maintenance-free battery
- Brushless, single-phase 230 V, 50 Hz alternator
- Key start panel with engine protection

Mast

- 9 meter, 3 section
- Automatic mast locking
- 360° rotation
- Manual winch system
- Double winch system for raising and titling

Flood Lights

- Four fixtures Metal Halide lamps, 1000 watts each
- Hardened glass lenses
- Non-corrosive, high-pressured die-cast aluminum housing
- Silicone gaskets for moisture protection

Canopy

- Lockable, fully enclosed, sound attenuated canopy
- Polyester-powder painted
- 50 hour run time fuel tank

Trailer

- Single axle, torsion bar suspension
- 50 mm ball or towing eye
- 184R 14 wheels and tires
- Over-run and hand breakers
- 1500 kg axle rating
- Four adjustable stabilizer supports, retractable for moving the tower

Dimensions and Weights

Length:

4710 mm (max)
4425 mm (min)

Height:

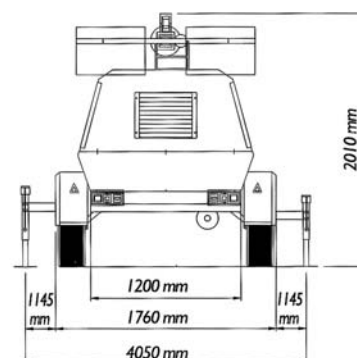
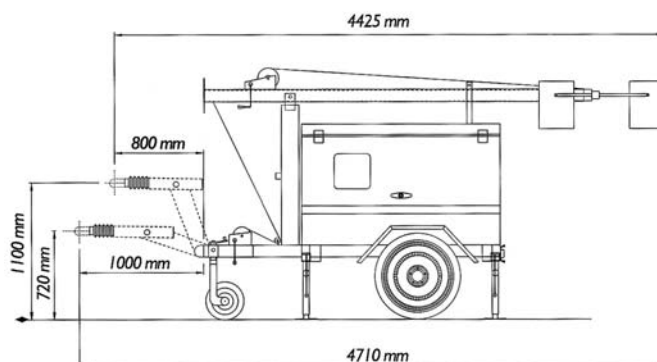
2010 mm

Width:

1760 mm

Dry Weight:

1200 kg



Features

- 8 meter hand operated telescopic mast
- Powered by compact, electric start diesel generator
- One staff operation
- Removable generating set
- Extra power available for power tools e.g. Drill, Grinders, etc.

Generating Set

- Air cooled, 3000 rpm diesel engine
- Silenced operation
- Electric starting system
- Replaceable dry type air filter
- Gen-set control panel and outlet socket
- Single phase, 230 V, 50 Hz alternator
- 4.3 kW Gen-set, continuous power

Mast

- 3-section and 8 meter galvanised mast
- Manual winch system
- One-staff operation

Flood Lights

- Four fixtures Halogen Lamps, 500 watts or 1000 watts each
- Non corrosive, die-cast aluminium housing

Canopy

- Sound attenuated, compact canopy
- Noise level 69 dB(A) / 7 meter
- 12 hours run capacity fuel tank

Trailer

- Single axle, torsion bar suspension
- 50 mm towing eye
- 13" wheels and tyres
- Hot dipped galvanised profile type steel material

Dimensions & Weight

- Length (with trailer) : 3650 mm
- Width (with trailer) : 1100 mm
- Height : 1500 mm
- Weight (dry) : 320 kg



HEAD OFFICE

Aksa Jeneratör Sanayi A.Ş.
Gülbahar Caddesi 1. Sokak 34212
Güneşli / Istanbul - Turkey
Tel : +90 212 478 66 66
Fax : +90 212 657 55 16
E-mail : export@aksa.com.tr

FACTORIES

TURKEY

Gülbahar Caddesi 1. Sokak 34212
Güneşli / Istanbul - Turkey
Tel : +90 212 478 66 66
Faks : +90 212 657 55 04

TURKEY

Tasocagi Yolu No: 22 Mahmutbey
Bagcilar / Istanbul - Turkey
Tel : +90 212 446 43 01
Fax : +90 212 446 43 00

UNITED KINGDOM

Lister Petter Industrial Estate, Church Road Cam
Dursley Glos, GL11 5PY, United Kingdom
Tel : +44 1453 549 223
Fax : +44 1453 549 227

SERVICE & SPARE PARTS

TURKEY

Basin Express Yolu Cemal Ulusoy Cad. No: 33
Istanbul - Turkey
Tel : +90 212 471 34 34 pbx
Fax : +90 212 696 20 29
E-mail: satis@aksaservis.com.tr

BRANCH OFFICES & WAREHOUSES

ALGERIA

Aksa Algeria
20, Rue D'Anjou Hydra, Alger
Algeria
Tel : +213 21 60 81 48
Fax : +213 21 48 41 44
E-mail : aksaalgerie@aksa.com.tr

CHINA

Aksa China (Suzhou)
Zhongxin City, 128 Donghuan Road,
Room 706 Suzhou China 215021 P.R. China
Tel : +86 512 6725 1137
Fax : +86 512 6725 1317

DUBAI

Aksa Middle East
Post Box No 18167, Warehouse
No. RA08/LC07 Jebel Ali Free Zone, Dubai
United Arab Emirates
Tel : +971 4883 3292
Fax : +971 4883 3293
E-mail : sales@aksa.ae

IRAQ

Aksa Iraq
Sahet Al-Wathik, Al Wahda St. 909 Baghdad,
Iraq
Tel : +964 790 191 60 86
: +964 790 191 60 89
E-mail: aksa_baghdad@yahoo.com

IRAN

Aksa Iran
Apartment 22, the 6th. Floor
Dasto Building, No: 1421 Vali-e-Asr Ave.
Tehran, Iran
Tel : +98 21 205 4212
: +98 21 201 6502
Fax : +98 21 201 8921
E-mail : aksatehran@gmail.com

KYRGHYZISTAN

Aksa Central Asia Ltd.
40 Manas Str. Bishkek, Kyrgyz Republic
Tel : +996 312 21 17 79
Fax : +996 312 66 23 23
E-mail : aksaasia@elcat.kg

KAZAKHISTAN

Aksa Central Asia Kazakhstan Ltd.
111/48 Furmanova Str. Almaty, Kazakhstan
480091
Tel : +732 72 50 67 31 / 41
Fax : +732 72 50 67 91
E-mail : aksa@arna.kz

NIGERIA

Aksa Generators (W.A) Ltd.
99, Oduduwa Crescent,
Ikeja Gra, Lagos, Nigeria
Tel : +234 1 481 3121
Fax : +234 1 482 3013
E-mail : aksanigeria@yahoo.com

SINGAPORE

Aksa Far East Pte. Ltd.
94 Tuas Avenue 11 Singapore 639103
Tel : +65 6863 2832
Fax : +65 6863 0392 - 6863 2956
E-mail : aksafe@aksafareast.com.sg

UNITED KINGDOM

Aksa International (UK) Ltd.
Lister Petter Industrial Estate, Church Road Cam
Dursley Glos, GL11 5PY / United Kingdom
Tel : +44 1453 549 223
Fax : +44 1453 549 227
E-mail : sales@aksa-uk.com